

# STERGIS Porch Enclosure Systems

Residential Applications

## Architect's Specifications

**General:** Manufactured by *STERGIS* Windows and Doors, Attleboro, Massachusetts.

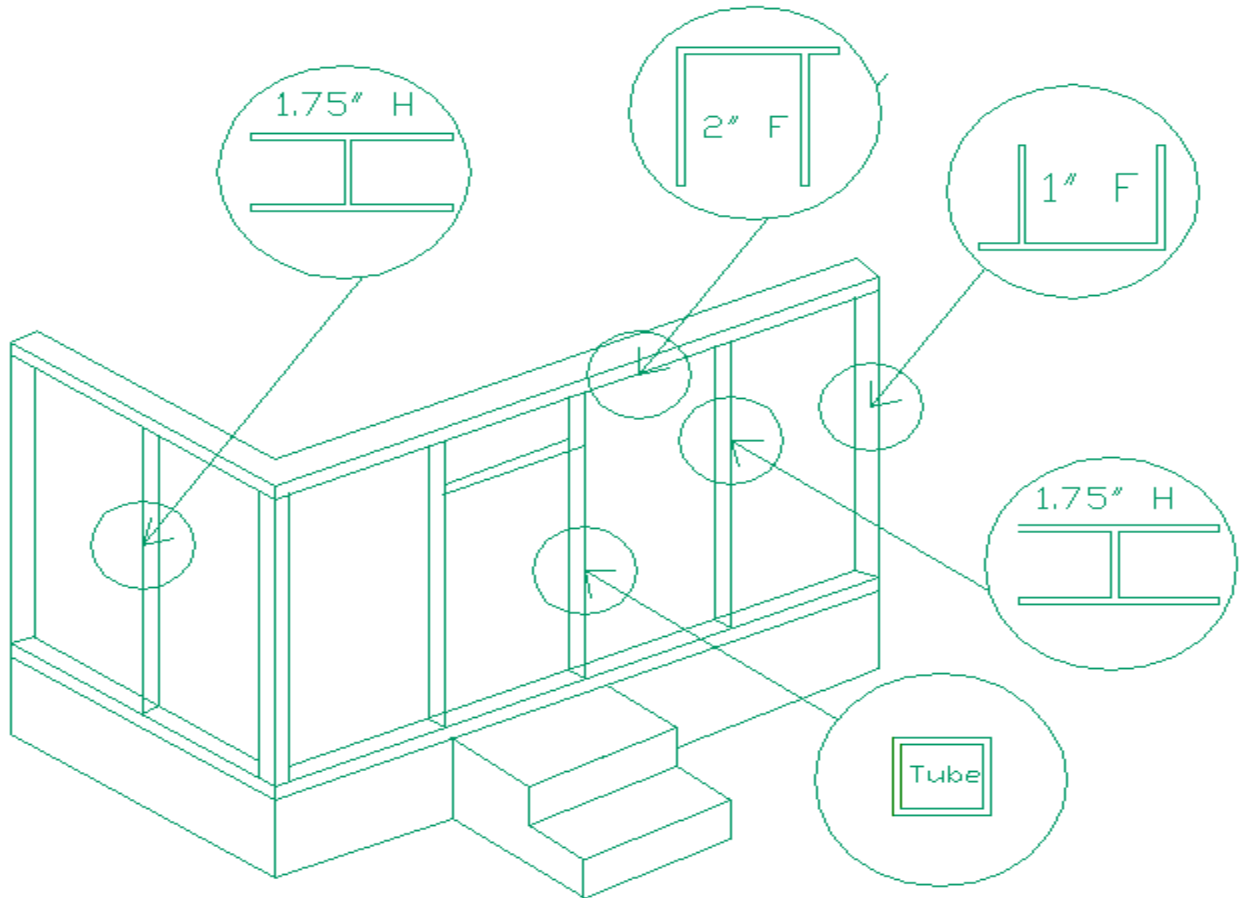
**Materials:** Enclosure system shall consist of the Combination Storm Door Panel and special aluminum frame and mulling elements. Extrusions for both door panel and framing and mulling elements shall be 6063-T5 heat treated aluminum alloy.

**Panel Construction & Accessories:** The panel frames shall consist of hollow extrusions, reinforced with cross mullions of hollow box construction with a minimum wall thickness of .060". The door panel frame shall be mitered and joined with stainless steel screws into die cast corner keys. Door main rails shall be 1 1/8" deep and 2 3/8" wide. The mullions shall overlap the inside lip of the frame and shall be attached to the frame by four stainless steel screws. The mullions shall be a minimum of 1" thick by 2 3/8" wide. The kickplate shall be inserted and glued with a silicone based adhesive into a 1/8" deep groove on all four sides. The kickplate shall be an .032" textured or embossed aluminum sheet. The accessory pieces shall consist of 1" F channel, 2" F channel, 1 1/2" U channel and 2" H channel all with a nominal wall thickness of .050".

**Sash & Screen Insert for Door Panel:** Sash shall be glazed with 1/8" tempered glass as standard. Insert shall be marine glazed using vinyl wrap around a U-channel set in an aluminum frame. Corners shall be mitered and joined by the use of a stamped cast corner key securely staked in place. Screen frame shall be of hollow box construction. It shall be mitered and staked using stamped aluminum corners. Screen wire shall be 18 x 16 mesh, non-glare charcoal finish aluminum held in place by a corrugated vinyl spline. Both glass and screen insert shall be retained in the door panel by the use of aluminum clips and thumb screws set in aluminum rivnuts.

**Available Finishes:** All aluminum finishes shall be electrostatically applied baked enamel in white, bronze and black. Other optional colors are available

**Options:** Acrylic, lexan, or special tempered glass shall be available on certain sizes.



When ordered with acrylic, lexan, or special tempered glass, we are able to make the door panels any width between 12" and 48" and any height from 50" to 100".

